

Operating Instructions  
**ESCO Part #12500**

**Steel Interlocking Cribbing Set**  
To Support Off Highway Vehicles During Tire Changing

**WARNING**

**SAFETY PRECAUTION**

This product, as well as all Tire Tools, should never be used by persons unless they have been trained properly according to O.S.H.A. Regulation #29CFR 1910.1771 entitled "Servicing Single-Piece & Multi-piece Rim Wheels." Copy of the Regulation is enclosed or contact this manufacturer.

Part #12500 Steel Interlocking Cribbing Set consists of 3 steel support stands that can be used individually or stacked to obtain additional height as shown below.

Can be used individually



or



Stacked for  
additional  
height

**Directions for use:**

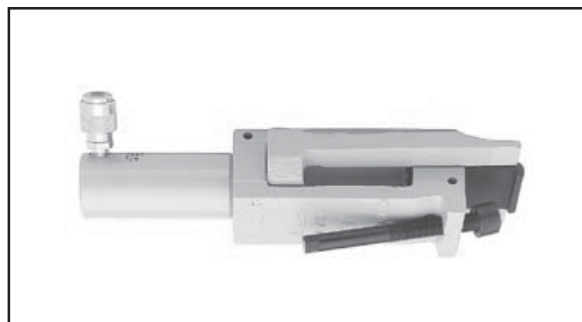
- Chock wheels of vehicle before any attempt to lift is made.
- Do not get beneath the load while lifting.
- Do not get beneath the load when lowering - use a minimum 15' hydraulic hose from jack to air hydraulic pump. Operate air hydraulic pump from beneath the load.
- Use only on level and firm surface.
- Do not exceed rated capacity (55 ton).
- Stands must be on a stable base which will support the load while lifting.
- Once the load is raised by jacking, wooden blocks, jack stands or other cribbing must be used to support the load - **NEVER**- get beneath a load without adequate blocking or cribbing to support the load.
- Stack cribbing stands no more than 3 high to a maximum of 18".



15270 Flight Path Drive | Brooksville, FL 34604  
Phone (352) 754-1117 | Toll Free (800) 352-9852 | Fax (352) 754-4508  
Web Site: [www.esco.net](http://www.esco.net) | Email Address: [sales@esco.net](mailto:sales@esco.net)

*(See Other Side For Additional Tools For Tire Changing.)*

. . . Other ESCO Tools That Can Help  
You Change OTR - E/M Tires and Wheels



**#10100  
Bead Breaker**



**#10312 - 55 Ton or  
100 Ton Aluminum Jack**



**#10500  
Air Hydraulic Pump**



**#90300 Bead Seat  
Puller and Rim Lifter**



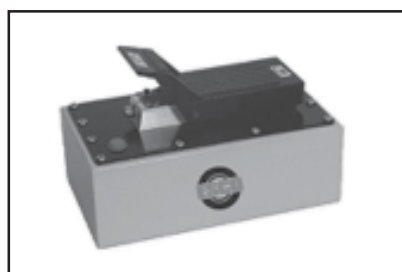
**#12510  
OTR Block Set**



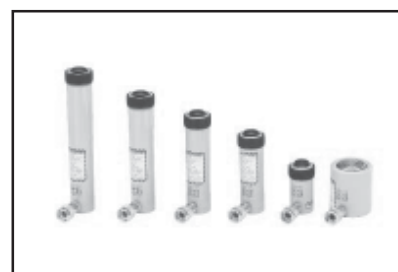
**#90100  
Rotating Tire Sling**



**#10607 Caterpillar  
Shur-Lok Adapter**



**#10592 Air  
Hydraulic Pump**



**Hydraulic Rams**



**#90200 Bar Push Unit and  
Safety Cage**



**#90400 E/M  
Bead Hook**



**#12500 Steel Crib  
Stand Set**

For more information on these products,  
visit our Web Site at [www.esco.net](http://www.esco.net).