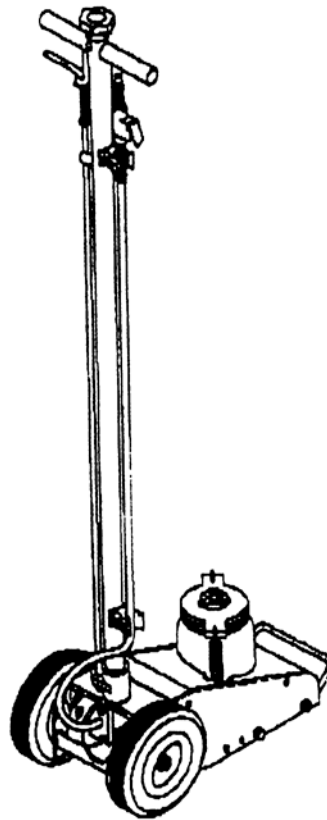


Air Actuated Hydraulic Jacks

Operating Instructions & Parts Manual

Model 10439
Capacity 44 Ton



Save these instructions. For your safety and the safety of others around you, read carefully before attempting to assemble, service or use your jack. Observe all safety and warning information. Always wear safety glasses when operating this product. Failure to comply with the information contained within could result in severe, even fatal injury and/or property damage.



PRODUCT DESCRIPTION

ESCO Air Actuated Hydraulic Bottle Jack is designed for lifting, but not sustaining, load ranging up to 44 tons (10434). It can be used vertically or angled to 5 degrees from vertical position. After lifting, loads must be immediately supported by appropriate means. This model(10434) is equipped with a 3-position handle lock to aid in proper saddle/lift point alignment. To further aid positioning, 10434 is equipped with large rubber, pivot wheels. This jack is **not recommended** for use in lifting or positioning houses and/or other building structures. This jack comply with applicable **ASME / ANSI** Standards. Ensure that your air source can dedicate 7.8 CFM @ 120 - 200 PSI to each jack operated. To ensure dependable, troublefree operation an air dryer and oiler is recommended.

SPECIFICATIONS

Model	Capacity	Jack Size(L x W)	Min. Height	Max. Height
10439	44 Ton	23" x 14 1/2"	9 1/4"	16 1/4"

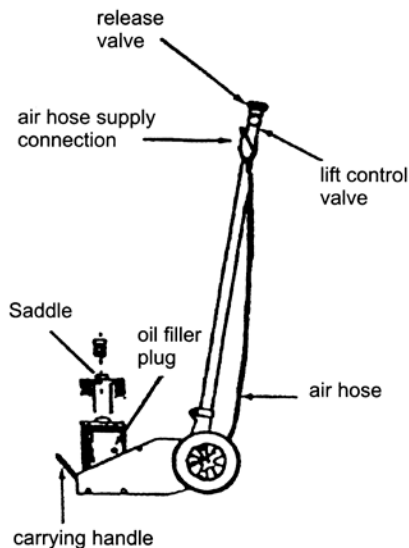


Figure 1 - Model 10439 Nomenclature

BEFORE USE

1. Verify that the product and the application are compatible, if in doubt call ~**ESCO** Technical Service (800) 352-9852, (352) 754-1117.
2. Before using this product, read the ~owner's manual completely and familiarize yourself thoroughly with the product and the hazards associated with it's improper use.
3. Open the release valve. (counter-clockwise no more than 2 full turns)
4. With ram fully retracted, locate and remove the oil filler plug. This will help release any pressurized air which may be trapped within the reservoir. Ensure the oil level is just below the oil filler plug hole. Reinstall the oil filler plug.
5. Inspect before use. Do not use if broken cracked or damaged parts are noted.
6. Pour a teaspoon of good quality, air tool lubricant into the air supply inlet of the lift control valve. (See Illustration) Connect to air supply and operate for 3 seconds to evenly distribute

7. Check to ensure that jack rolls freely (if so equipped) and that the air pump operates smoothly before putting into service. Replace worn or damaged parts and assemblies with **ESCO** Authorized Replacement Parts only.

8. This product is fitted to accept the popular 1/4" NPT air nipple. When installing 1/4" NPT nipple of your choice, ensure that thread tape or compound is used when servicing connections.



OPERATION**Lifting**

1. Assemble handle, use OIPM illustration as guide, connect to adequate air source.
2. Secure the load to prevent inadvertent shifting and movement.
3. Position the jack near desired lift point.
4. Close the release valve by turning the handle mounted knob, clockwise firmly.

CAUTION: DO NOT USE A SADDLE EXTENDER WHEN USING THIS PRODUCT, LIFT ONLY ON THE MANUFACTURER'S RECOMMENDED LIFT POINTS AND IN ACCORDANCE WITH THE PUBLISHED GUIDELINES IN YOUR VEHICLE OWNERS MANUAL. ALWAYS USE JACK STANDS TO SUPPORT THE LOAD IMMEDIATELY AFTER LIFTING.

5. Squeeze the lift control valve until saddle contacts load. Check to ensure proper saddle/lift point alignment. To end cycle, simply release the grip on the lift control valve.

NEVER WIRE, CLAMP OR OTHERWISE DISABLE THE LIFT CONTROL VALVE TO WORK BY ANY MEANS OTHER THAN BY USING THE OPERATORS HAND.

6. Raise load to desired height, then immediately transfer the load to appropriately rated support devices such as jack stands.



THIS IS A LIFTING DEVICE ONLY. IT IS DESIGNED TO LIFT PART OF THE TOTAL VEHICLE (ONE WHEEL OR AXLE). ALWAYS WEAR SAFETY GLASSES WHEN USING THIS EQUIPMENT. CENTER LOAD ON SADDLE BEFORE LIFTING. NEVER WORK ON, UNDER OR AROUND LOAD UNTIL IT IS PROPERLY SUPPORTED. TRANSFER THE LOAD IMMEDIATELY TO APPROPRIATELY RATED JACK STANDS. DO NOT USE THIS PRODUCT FOR ANY PURPOSE OTHER THAN THAT FOR WHICH IT WAS INTENDED. IT IS OWNER'S RESPONSIBILITY TO KEEP LABELS AND INSTRUCTIONAL MATERIAL LEGIBLE AND AVAILABLE. REPLACEMENT LABELS AND MANUALS ARE AVAILABLE FROM THE MANUFACTURER. FAILURE TO HEED THESE AND ALL OTHER WARNINGS PERTAINING TO THIS PRODUCT CAN RESULT IN SUDDEN LOSS OF LIFTED LOAD RESULTING IN DEATH, PERSONAL INJURY OR PROPERTY DAMAGE.

Lowering

1. Raise load enough to carefully remove jack stands,
2. Slowly turn handle mounted release valve knob, counter-clockwise, no more than 1/2 turn. If load fails to lower, **carefully** transfer the load to another lifting device and stands. Carefully remove affected ~jack(s) and stands. Carefully remove jack, again turning the release valve, slowly, no more than 1/2 full turn.



BE SURE ALL TOOLS AND PERSONNEL ARE CLEAR BEFORE LOWERING LOAD. DANGEROUS DYNAMIC SHOCK LOADS ARE CREATED BY QUICKLY OPENING AND CLOSING THE RELEASE VALVE AS THE LOAD IS BEING LOWERED. THE RESULTING OVERLOAD MAY CAUSE HYDRAULIC SYSTEM FAILURE WHICH COULD CAUSE SEVERE PERSONAL INJURY AND/OR PROPERTY DAMAGE.

3. After removing jack from under the load, ensure ram is fully lowered to reduce exposure to rust and contamination.



MAINTENANCE

Important: Use only a good grade hydraulic jack oil. Avoid mixing different types of fluid and **NEVER** use brake fluid, turbine oil, transmission fluid, motor oil or glycerin. Improper fluid can cause premature failure of the jack and the potential for sudden and immediate loss of load.

Adding oil

1. With saddle fully lowered and jack in its upright, level position, remove oil filler plug. It may be necessary to remove cover plate on some models.
2. Fill until oil is level with the filler plug hole, reinstall oil filler plug and cover plate.

Changing oil

For best performance and longest life, replace the complete fluid supply at least once per year.

3. With saddle fully lowered, remove the oil filler plug. It may be necessary to remove cover plate on some models.

1. Lay the jack on its side and drain the fluid into suitable container.

Note: Dispose of hydraulic fluid in accordance with local regulations.

2. Fill with good quality jack oil. We recommend Mobile ~DTE 13 or equivalent. Reinstall oil filler plug and cover plate.

Lubrication

1. A coating of light lubricating oil to pivot points, axles and hinges will help to prevent rust and assure that wheels, casters and pump assemblies move freely.
2. Periodically check the pump piston and ram for signs of rust or corrosion. Clean as needed and wipe with an oily cloth.

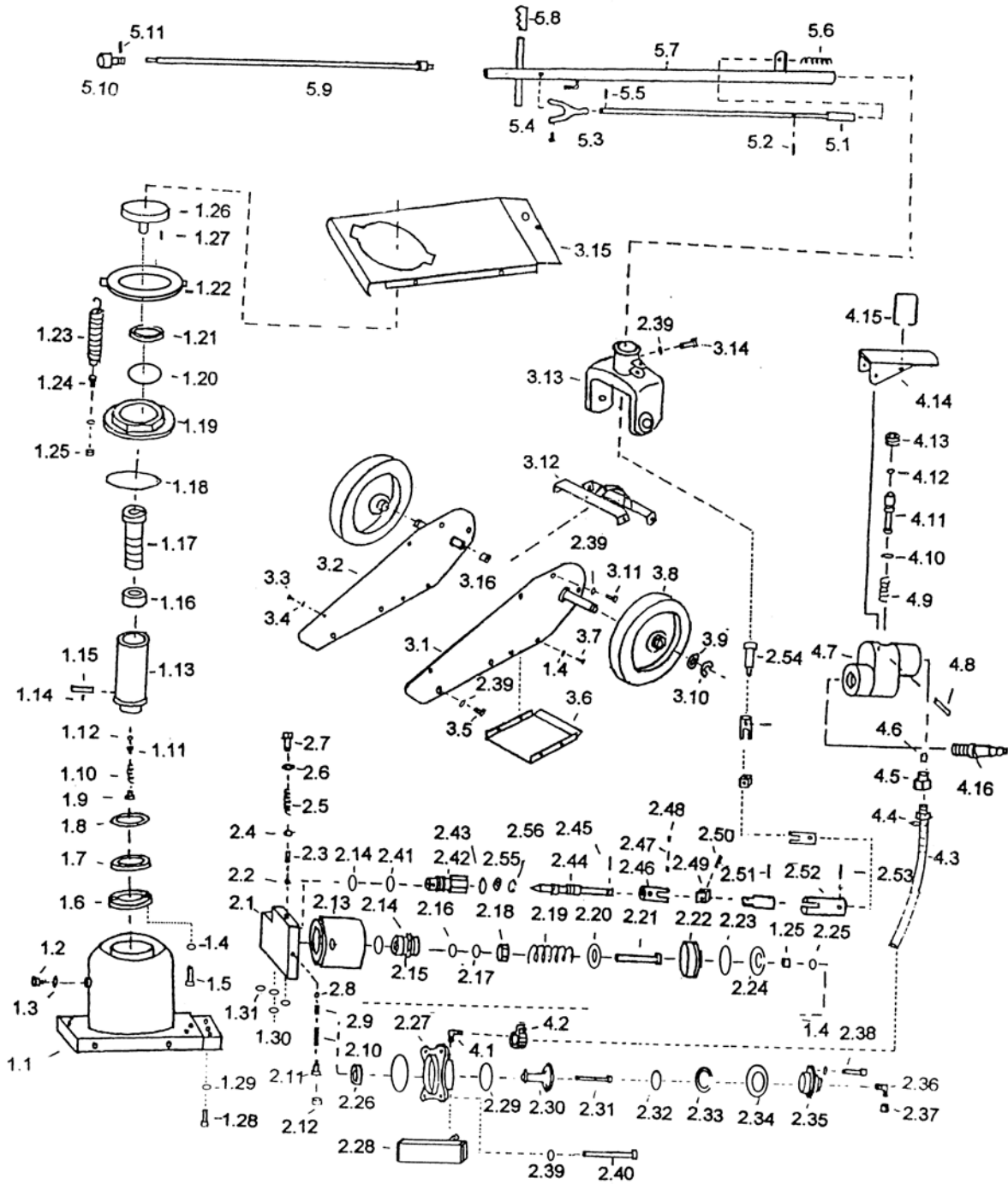
NEVER USE SANDPAPER OR ABRASIVE MATERIAL ON THESE SURFACES!

TROUBLE SHOOTING

Symptom	Possible Cause Corrective	Action
Jack will not lift load	Release valve not tightly closed Overload condition Pressure of air supply is too low	Ensure release valve tightly closed Remedy overload condition Change to a suitable pressured air source
Jack bleeds off after lift	Release valve not tightly closed Overload condition Hydraulic unit malfunction	Ensure release valve tightly closed Remedy overload condition Contact ESCO Tech. Service
Jack will not lower after unloading	Reservoir overfilled Linkages binding	Drain fluid to proper level Clean and lubricate moving parts
Poor lift performance	Fluid level low Air trapped in system	Ensure proper fluid level With ram fully retracted, remove oil filler plug to let pressurized air escape, reinstall oil filler plug
Will not lift to full extension	Fluid level low	Ensure proper fluid level



EXPLODED DRAWING



Model 10439

Parts No.	Description	Qty	Parts No.	Description	Qty	Parts No.	Description	Qty
1.01	Cylinder Base	1	2.15	Union	1	3.02	Right Plata	1
1.02	Screw	1	2.16	Seal - Ring	1	3.03	Screw	5
1.03	O-ring	1	2.17	Copper Bush	1	3.04	Washer	6
1.04	Washer	13	2.18	Cap	1	3.05	Bolt	4
1.05	Bolt	2	2.19	Spring	1	3.06	Scale Board	1
1.06	Piston Head	1	2.20	Washer	1	3.07	Bolt	4
1.07	Seat Ring	1	2.21	Plug	1	3.08	Wheel	2
1.08	Ring	1	2.22	Big Piston	1	3.09	Washer	2
1.09	Screw	1	2.23	0 - Ring	1	3.10	Circlips	2
1.10	Spring	1	2.24	Protecting - Ring	1	3.11	Bolt	4
1.11	Spring Seat	1	2.25	Washer	1	3.12	Supporter	1
1.12	Ball	1	2.26	Seal - Washer	1	3.13	Supporter Arm	1
1.13	Piston Rod	1	2.27	Air Pump Body	1	3.14	Bolt	1
1.14	Pin	1	2.28	Muffler	1	3.15	Cover	1
1.15	Hautm	1	2.29	0 - Ring	1	3.16	Formula	2
1.16	Screw Bush	1	2.30	Small - Piston	1	4.01	Air Screw	1
1.17	Screw Rod	1	2.31	Bolt	1	4.02	Sprial Clamp Ring	1
1.18	0 - Ring	1	2.32	0 - Ring	1	4.03	Air Pipe A'ssy	1
1.19	Top Cap	1	2.33	Protecting - Ring	1	4.04	Pothook	1
1.20	0 - Ring	1	2.34	Washer	1	4.05	Connecting Nut	1
1.21	Dust-Protecting Ring	1	2.35	Cap	1	4.06	Air Filler	1
1.22	Top Cover	1	2.36	Screw	1	4.07	Air Valve Body	1
1.23	Spring	4	2.37	Nut	1	4.08	Pin	1
1.24	Bolt	4	2.38	Bolt	3	4.09	Spring	
1.25	Nut M6	6	2.39	Washer	13	4.10	Sealing Washer	1
1.26	Adapter		2.40	Bolt	4	4.11	Valve Rod	1
1.27	Pin	1	2.41	0 -ring	1	4.12	0 - Ring	1
1.28	Bolt	4	2.42	Switch Case	1	4.13	Screw	
1.29	Washer	4	2.43	0 - Ring	1	4.14	Petal	
2.01	Cylinder Base	1	2.44	Switch Core	1	4.15	Retaining Ring	1
2.62	Ball	1	2.45	Pin	2	5.01	Locator	1
2.03	Pole	1	2.46	Fork axle with hole	4	5.02	Split Pin	1
2.04	Ball	1	2.47	Pin	2	5.03	Locating Handle	1
2.05	Spring	1	2.48	Convention	4	5.04	Hexagon-Headed Screw	1
2.06	Copper Washer	1	2.49	Connecting Block	2	5.05	Elastic Pin	1
2.07	Screw	1	2.50	Pin	2	5.06	Spring	1
2.08	Ball	1	2.51	Pin	1	5.07	Outside Tube	
2.09	Spring Seat	1	2.52	Joint	1	5.08	Handle	
2.10	Spring	1	2.53	Pin	1	5.09	Control Rod	1
2.11	Screw	1	2.54	Connecting Block	1	5.10	Operating Handle	1
2.12	Screw Cap	1		Washer	1	5.11	Elastic Pin	1
2.13	Pump Body	1	2.56	Circlip	1			
2.14	1 Copper Washer	2	3.01	Left Plate	1			



ONE YEAR LIMITED WARRANTY

For a period of one (1) year of date of purchase, **Equipment Supply Company** will repair, or ,replace, at its option, without charge, any of its products which fails due to a defect in material or workmanship, or which fails to conform to any implied warranty not excluded hereby.

Performance of any obligation under this warranty may be obtained by returning the warranted product, freight prepaid, to **Equipment Supply Company** Warranty Service Department, 15424 Flight Path Drive Brooksville, Florida 34604.

Except where such limitations and exclusions are specifically prohibited by applicable law. (1) the CONSUMER'S SOLE AND EXCLUSIVE REMEDY SHALL BE THE REPAIR OF REPLACEMENT OF DEFECTIVE PRODUCTS AS DESCRIBED ABOVE, and (2) Equipment **Supply** Company SHALL NOT BE LIABLE FOR ANY CONSEQUENTIAL OR INCIDENTAL DAMAGE OR LOSS WHATSOEVER, and (3) THE DURATION OF ANY AND ALL EXPRESSED AND IMPLIED WARRANTIES, INCLUDING WITHOUT LIMITATION, ANY WARRANTIES OF MERCHANTABILITY AND FITNESS FOR A PARTICULAR PURPOSE, IS LIMITED TO A PERIOD OF ONE (1) YEAR FROM DATE OF PURCHASE.

Some states do not allow limitations on how long an implied warranty lasts, so the above limitation may not apply to you. Some states do not allow the exclusions or limitation of incidental consequential damages, so the above limitation or exclusion may not apply to you. This warranty gives you specific legal right, and you may also have other rights which vary from state to state.

REPLACEMENT PARTS AND REPAIR KITS

When ordering replacement parts and repair kits, please refer to the model number serial number found on the product, then give the part number and description.

Available Parts: Please refer to the Parts drawing when ordering parts. Not all components of the jack are replacement item, but are illustrated as a convenient reference of location and position in the assembly sequence. When ordering parts, give Model number, serial number and description below. Call or write for current pricing: Equipment Supply Company. 15424 Flight Path Drive Brooksville, Florida 34604, U.S.A. Tel: (800) 352-9852 (352) 754-1117 Fax: (352) 754-4508

